

Summer 2024 Open Grant Cycle



Our Summer 2024 Responsive Grant Cycle opens **July 1st**. Keep reading to learn more!

[APPLY HERE](#)

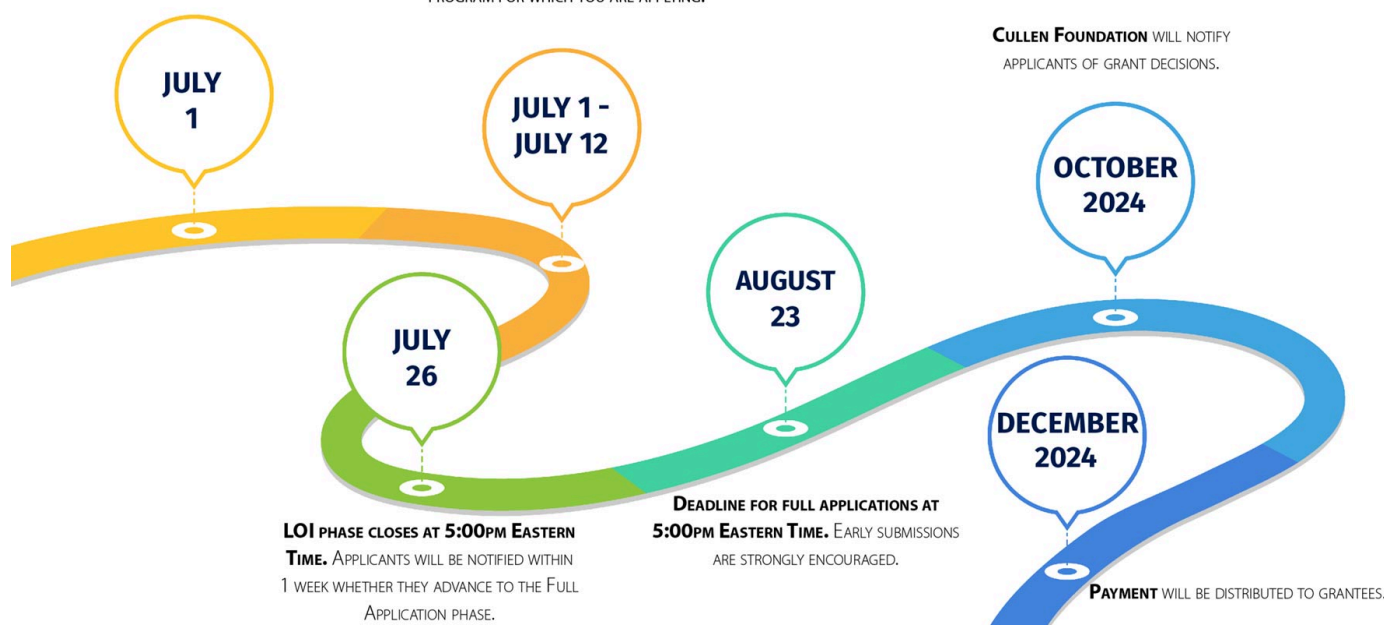
Performing Arts Responsive Grant

This is a two-stage process (LOI and Application).

LETTER OF INTENT (LOI) STAGE OPENS. LOI'S ARE ACCEPTED ON A ROLLING BASIS BETWEEN **JULY 1ST AND JULY 26TH**. ONCE AN LOI IS APPROVED, THE APPLICANT MAY PROCEED TO THE FULL APPLICATION PHASE. CULLEN FOUNDATION STRONGLY ENCOURAGES EARLY SUBMISSIONS SO THAT EACH REQUEST MAY RECEIVE ADEQUATE TIME FOR REVIEW.

ALL APPLICANTS MUST SCHEDULE A PHONE CALL WITH CULLEN STAFF PRIOR TO SUBMITTING AN LOI. THIS PHONE CALL WILL INDICATE YOUR ORGANIZATION'S INTENT TO APPLY AND PROVIDE AN OVERVIEW OF THE PROGRAM FOR WHICH YOU ARE APPLYING.

[CLICK HERE TO LEARN MORE](#)



Education Responsive Grant:

This grant cycle will focus on Capacity Building.

This is a one-stage process (Application only).

[CLICK HERE TO LEARN MORE](#)



Schedule your LOI Call

To schedule your LOI call, please contact one of the staff members listed below:

**Performing Arts
LOI**

Florine Luhr

fluhr@thecullenfoundation.org

**Education
LOI**

Nick Schifano

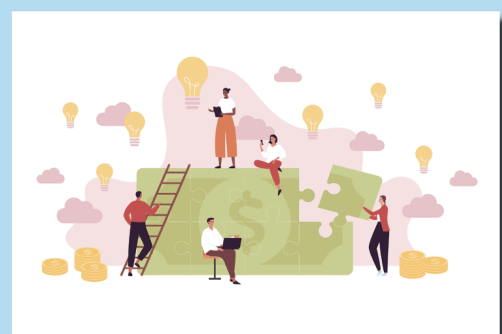
nschifano@thecullenfoundation.org

[VISIT OUR FAQ](#)

Frequently Asked Questions Performing Arts Cycle

Does Cullen Foundation fund multi-year grants?

Yes, grant requests may be made for one, two, or three years of funding. However, multi-year requests are only approved when the Foundation believes that the nature of the request is essential to the project's success.

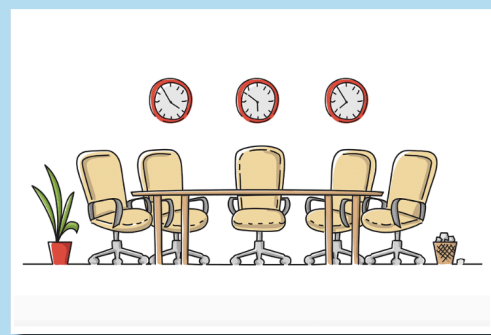


Who decides if a grant will be made?

The Board of Directors reviews all qualifying applications and determines if they may be funded.

What is the maximum amount that can be requested per year?

The maximum amount that can be requested is \$100,000 per year. Awards for this amount are rare and only approved if the Foundation feels that there is a strategic alignment between our mission and your program's outcomes.



Frequently Asked Questions for Summer 2024 Education Capacity Building Grant Cycle

How do I know my organization is eligible to apply in the Summer 2024 Education Grant Cycle?

This cycle is intended for Erie County based nonprofits with Supplemental Academic Programs (SAPs) serving economically disadvantaged students in grades PreK through 12. The majority of the programs Cullen funds are evidence based academic programs serving city of Buffalo students. If this sounds like a fit for a program your organization runs, we hope you'll consider applying for a capacity building grant through this cycle to help strengthen your program further.

What are the specific steps to completing an Application in this cycle?

- 1.) Get the link to the pre-cycle SAP survey.** Any nonprofit running a PreK-12 Supplemental Academic Program (SAP) that intends to apply in this cycle must complete an evaluation capacity survey. Contact Nick Schifano at nschifano@thecullenfoundation.org to get connected with VIA Evaluation which is managing an evaluation capacity survey for us. **Complete the survey by August 2, 2024.** (Note: If you already have the survey link through an email from VIA Evaluation, there's no need to contact Nick, just complete the survey!)
- 2.) Complete a pre-application call with Nick Schifano between July 1 and July 19, 2024.** This is a 30-minute phone call you'll schedule to talk through the program you're seeking support for.
- 3.) Log into Cullen's grants portal (Foundant) to complete an Application. Use this link.** Once you're signed into the portal, you'll select *Summer 2024 Capacity Building Grant- Education* from the choices. Complete and submit this **Application by the August 2, 2024 deadline.**

My organization has an open grant with Cullen Foundation, can we still apply in this cycle?

There's a good chance your organization falls into one of the three categories, see below:

- 1.)** If you have a grant with Cullen that ended in 2024 or is ending later in 2024, you may be eligible.
- 2.)** However, if you have an open grant ending in 2025, 2026 or 2027, you are not eligible for capacity building support through this cycle.
- 3.)** If you've never applied to Cullen but have a program that fits the criteria, we hope you'll consider applying for a capacity building grant through this cycle to help strengthen your program further.

Regardless of which of the three (3) descriptions above applies to your organization, you can confirm your eligibility by checking with Nick Schifano at: nschifano@thecullenfoundation.org.

I want to apply for program funds from Cullen for my education program, can I do that in this cycle?

No, this is not a cycle for program funds, it's only for capacity-building funds. However, you should apply in this cycle if your organization needs capacity-building services to get to "stage 1". Once your organization is at "stage 1", it's eligible to apply in our program fund cycle that **opens January 1st**.

I'd like to check the standard eligibility criteria for Cullen's Education grants. What's the link to Cullen's website for this information?

We appreciate when our nonprofit friends start by reviewing our website as it's the best and most efficient way to determine preliminary fit with our focus areas and criteria. Visit this page to start your review of our eligibility, criteria and focus areas: <https://www.thecullenfoundation.org/responsive-grant-education>

[VISIT OUR FAQ](#)